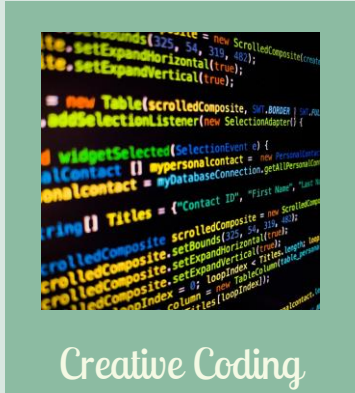


# Code to Care

from Isolation to Inclusion for  
Special Education Needs (SEN) Youth



# Code to Care Project

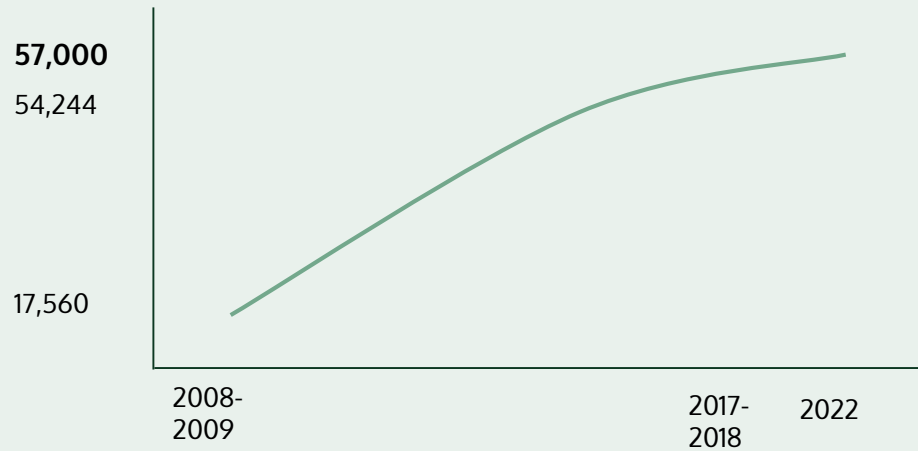


## Initial Target

- 50 students in Form 1 to 3
- 2 Schools for Social Development (SSD)

## Aims

- Provide psychosocial support, well-being, a sense of connectedness to the community



Dramatic increase in no. of SEN students

## Background

- But in 2022, only **3975** SEN students were enrolled in Spec. Ed. primary sch, and **4496** in secondary sch.
- There are about **60 schools** for SEN students in HK.

Schools for Social Development

Residential

Host students who need more supervision not available at home

Students who cannot remain in regular or SEN schools due to behavioral, relational or family problems

Usually students who are most difficult to work with

## What are SSDs?

There are **8 SSDs** in HK with a total of about **600 students**.

We are working with Chak Yan School and shall recruit one or two more SSDs.

# Issues with SEN Students



**Limited** contact  
with the larger community



**Less motivated** in  
learning traditional subjects



**Limited** vocational opportunities

# Objectives



Holistic development and community integration



Engage, stimulate and motivate  
Problem-Based & Student-Directed Learning  
Connect students to their future studies & vocations



Develop actionable, sustainable, and scalable  
model

# Benefits



- Gain a sense of **inclusion, belonging, and community**



- Increase **confidence, self-esteem, resilience, and well-being**



- **New vocational skills**



- Mentors **can continue inclusive activities in the community**



- A model **for larger sustainable and scalable programs.**

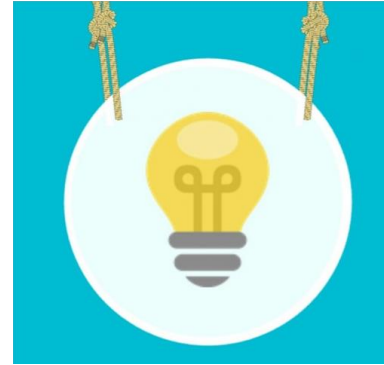
# Uniqueness



Inclusive



Practical



Innovative



Holistic

# Programme Design



*For Students*

1. Coding Course
2. Design Course
3. Media Course
4. Holistic Development



*For program sustainability  
and scalability*

5. Mentors Training
6. Programme assessment  
and evaluation
7. Programme documentation  
and communications





*For Students*

## Coding Course

- Computational Thinking and Coding Skills



- Enhance and broaden students' interests in STEM subjects
- Learning Computational Thinking and to solve problems independently

## Design Course

- Design Thinking and Solution



- Identify and solve problems with Design Thinking concepts
- Opportunities to develop visual ability and spatial intelligence

## Media Course

- Media Technology and Creator Skills



- Acquire digital and media literacy,
- Transform the habits of media consumption to active media creation
- Increase students' creativity, self-expression, and entrepreneurial spirit
- Gain confidence and self-esteem



*For Students*

# Holistic Development for SEN

## Psychosocial



- Grit
- Motivation
- Confidence
- Growth mindset

## Well-being



- Resilience
- Mental health
- Life satisfaction

## Connectedness



- Empathy
- Sense of community
- Sense of belonging
- Social connections



*For program sustainability and scalability*

## Mentors Training



- To be **effective** in helping students' holistic development
- Learn how to **engage** with SEN students.
- Develop the proper **attitude, skills** and **mindset** in supporting SEN students.

## Programme assessment & evaluation



- Ensure changes and impact of the programs are positive and effective

## Programme documentation & communications



- For program promotion and knowledge dissemination

# Expected Outcome



- **Positive** attitude change
- **Positive** psychosocial development
- Mentors' **positive** sense of community, relationship with students



- **Improved** behavior
- **Improved** wellness
- **Improved** relationships
- **Increased** sense of belonging & connection with the community



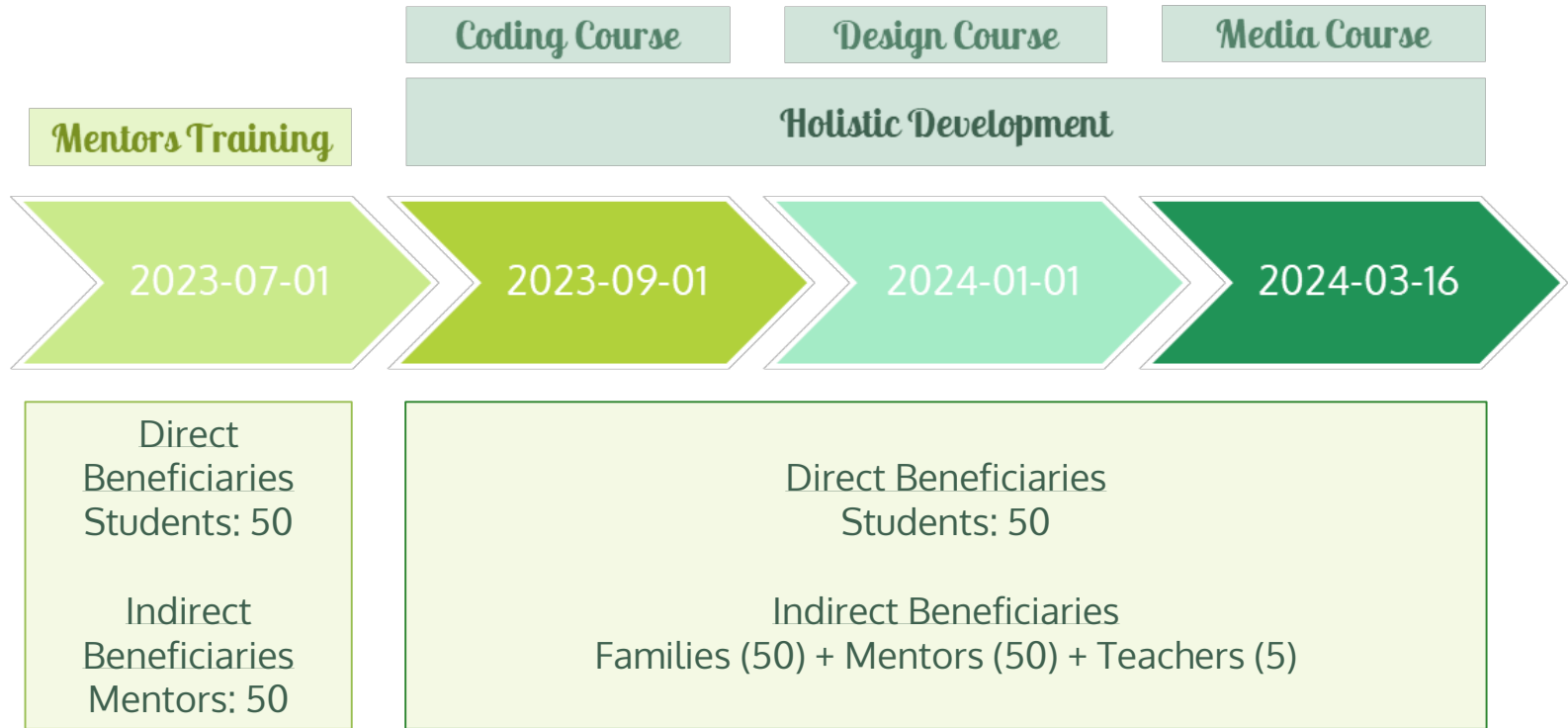
- **New** skills learned; performance/task completion

# Programme Deployment

	Course	No. of Participants	No. of hours per session	No. of sessions
For students	Coding	50	1	16
	Design			12
	Media			
	Holistic Development*		40	
For program sustainability & scalability	Mentors Training	50	2	20
	Program Assessment & Evaluation	To be conducted with HKU and HKPolyU		

\* Concurrently run with the above 3 courses; no. of sessions is tentative

# Timeline & Beneficiaries



# Scaling Up the Impact

